

YG-1 ИНСТРУМЕНТАЛЬНАЯ ОСНАСТКА

ОПРАВКИ ДЛЯ ТОРЦОВО НАСАДНЫХ ФРЕЗ



ОПРАВКИ

DIN 69871-SK

DIN 69893/ISO 12164-1-HSK

CBT (BT ДВОЙНОЙ КОНТАКТ) JIS B6339/MAS 403-BT

GOST 25827-93

КОМБИНИРОВАННЫЕ

DIN 69871-SK

DIN 69893/ISO 12164-1-HSK

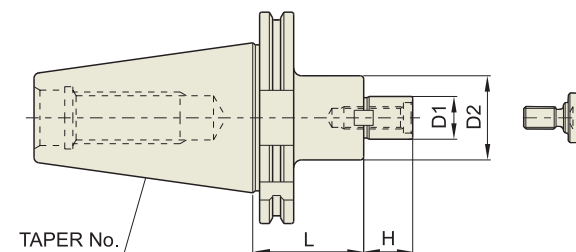
CBT (BT ДВОЙНОЙ КОНТАКТ) JIS B6339/MAS 403-BT

DIN 2080-ISO

ОПРАВКИ ДЛЯ ТОРЦОВО НАСАДНЫХ ФРЕЗ

ОПРАВКИ ДЛЯ ТОРЦОВЫХ НАСАДНЫХ ФРЕЗ

SMA



DIN 69871 - SK

Taper Accuracy
AT3

G Value
6.3

RPM
15,000

Coolant System
AD/B

■ DIN 69871-SK

◆ СТАНДАРТ

Unit : mm

КОНУС No.	МОДЕЛЬ	АРТИКУЛ	D1	D2	L	H	BEK (Kg)
30	SK30-SMA16-50	P2778901	16	32	50	17	0.85
	SK30-SMA22-50	P2778902	22	40	50	19	0.90
	SK30-SMA27-50	P2778903	27	48	50	21	1.03
40	SK40-SMA16-60	P2778904	16	32	60	17	0.35
	SK40-SMA22-60	P2778905	22	40	60	19	1.45
	SK40-SMA27-60	P2778906	27	48	60	21	1.70
	SK40-SMA32-60	P2778907	32	58	60	24	1.80
	SK40-SMA40-60	P2778908	40	70	60	27	3.10
50	SK50-SMA16-75	P2778909	16	32	75	17	2.80
	SK50-SMA22-75	P2778910	22	40	75	19	3.10
	SK50-SMA27-75	P2778911	27	48	75	21	3.40
	SK50-SMA32-75	P2778912	32	58	75	24	3.80
	SK50-SMA40-75	P2778913	40	70	75	27	4.50
	SK50-SMA50-75	P2778914	50	90	75	30	5.90

◆ УДЛИНЕННЫЕ

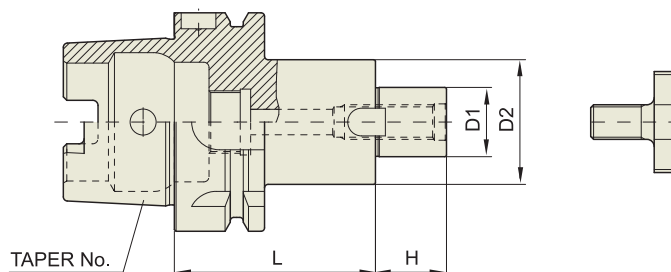
Unit : mm

КОНУС No.	МОДЕЛЬ	АРТИКУЛ	D1	D2	L	H	BEK (Kg)
40	SK40-SMA16-120	P2778915	16	32	120	17	1.70
	SK40-SMA22-120	P2778916	22	40	120	19	1.80
	SK40-SMA27-120	P2778917	27	48	120	21	2.40
	SK40-SMA32-120	P2778918	32	58	120	24	3.70
50	SK50-SMA16-120	P2778919	16	32	120	17	3.90
	SK50-SMA22-120	P2778920	22	40	120	19	4.40
	SK50-SMA27-120	P2778921	27	48	120	21	4.70
	SK50-SMA32-120	P2778922	32	58	120	24	5.00
	SK50-SMA40-120	P2778923	40	70	120	27	6.05

- ▶ Доступны изделия с конусом CAT (ANSI B5.50) и с дюймовой системой измерения.
- ▶ Данные о запасных деталях см на с. 1666.

ОПРАВКИ ДЛЯ ТОРЦОВЫХ НАСАДНЫХ ФРЕЗ

SMA



■ DIN 69893/ISO 12164-1-HSK FORM A

DIN 69893 - HSK	Taper Accuracy -	G Value 6.3	RPM 15,000	Coolant System AD/B
------------------------	----------------------------	-----------------------	----------------------	-------------------------------

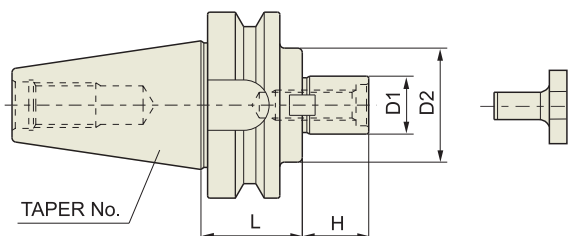
Unit : mm

КОНУС No.	МОДЕЛЬ	АРТИКУЛ	D1	D2	L	H	ВЕС (Kg)
40A	HSK40A-SMA16-50	P2778201	16	32	50	17	0.40
	HSK40A-SMA22-50	P2778202	22	40	50	19	0.50
	HSK40A-SMA27-60	P2778203	27	48	60	21	0.60
50A	HSK50A-SMA16-50	P2778204	16	32	50	17	0.50
	HSK50A-SMA22-60	P2778205	22	40	60	19	0.57
	HSK50A-SMA27-60	P2778206	27	48	60	21	0.75
	HSK50A-SMA32-60	P2778207	32	58	60	24	0.90
63A	HSK63A-SMA16-50	P2566001	16	32	50	17	0.81
	HSK63A-SMA22-50	P2566002	22	40	50	19	0.93
	HSK63A-SMA27-60	P2566003	27	48	60	21	1.22
	HSK63A-SMA32-60	P2566004	32	58	60	24	1.46
	HSK63A-SMA40-60	P2566005	40	70	60	27	1.80
100A	HSK100A-SMA16-50	P2566011	16	32	50	17	2.14
	HSK100A-SMA22-50	P2566012	22	40	50	19	2.25
	HSK100A-SMA27-50	P2566013	27	48	50	21	2.40
	HSK100A-SMA32-50	P2566014	32	58	50	24	2.60
	HSK100A-SMA40-60	P2566015	40	70	60	27	3.25
	HSK100A-SMA50-70	P2778209	50	90	70	30	5.40

ОПРАВКИ ДЛЯ ТОРЦОВО НАСАДНЫХ ФРЕЗ

ОПРАВКИ ДЛЯ ТОРЦОВЫХ НАСАДНЫХ ФРЕЗ

SMA



■ СВТ (ВТ ДВОЙНОЙ КОНТАКТ)

CBT	Taper Accuracy AT3	G Value 2.5	RPM 25,000	Coolant System AD/B
-----	-----------------------	----------------	---------------	------------------------

◆ СТАНДАРТ

Unit : mm

КОНУС No.	МОДЕЛЬ	Артикул	D1	D2	L	H	БЕС (Kg)
30	СВТ30-SMA16-50	P2778701	16	32	30	17	
	СВТ30-SMA22-50	P2778702	22	40	30	19	
	СВТ30-SMA27-50	P2778703	27	48	30	21	
40	СВТ40-SMA16-60	P2778704	16	32	60	17	
	СВТ40-SMA22-60	P2778705	22	40	60	19	
	СВТ40-SMA27-60	P2778706	27	48	60	21	
	СВТ40-SMA32-60	P2778707	32	58	60	24	
	СВТ40-SMA40-60	P2778708	40	70	60	27	
50	СВТ50-SMA16-75	P2778709	16	32	75	17	
	СВТ50-SMA22-75	P2778710	22	40	75	19	
	СВТ50-SMA27-75	P2778711	27	48	75	21	
	СВТ50-SMA32-75	P2778712	32	58	75	24	
	СВТ50-SMA40-75	P2778713	40	70	75	27	
	СВТ50-SMA50-75	P2778714	50	90	75	30	

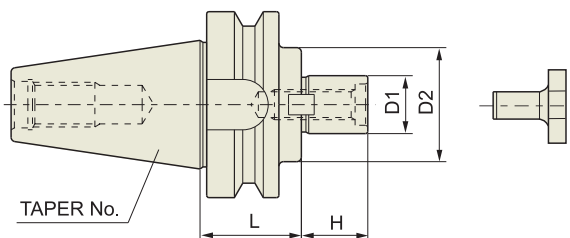
◆ УДЛИНЕННЫЕ

Unit : mm

КОНУС No.	МОДЕЛЬ	Артикул	D1	D2	L	H	БЕС (Kg)
40	СВТ40-SMA16-120	P2778715	16	32	120	17	
	СВТ40-SMA22-120	P2778716	22	40	120	19	
	СВТ40-SMA27-120	P2778717	27	48	120	21	
	СВТ40-SMA32-120	P2778718	32	58	120	24	
50	СВТ50-SMA16-120	P2778719	16	32	120	17	
	СВТ50-SMA22-120	P2778720	22	40	120	19	
	СВТ50-SMA27-120	P2778721	27	48	120	21	
	СВТ50-SMA32-120	P2778722	32	58	120	24	
	СВТ50-SMA40-120	P2778723	40	70	120	27	

ОПРАВКИ ДЛЯ ТОРЦОВЫХ НАСАДНЫХ ФРЕЗ

SMA



JIS B6339
- BT

Taper Accuracy
AT3

G Value
6.3

RPM
15,000

Coolant System
AD/B

■ JIS B6339/MAS 403-BT

◆ СТАНДАРТ

Unit : mm

КОНУС No.	МОДЕЛЬ	АРТИКУЛ	D1	D2	L	H	ВЕС (Kg)
30	BT30-SMA16-50	P2778801	16	32	30	17	
	BT30-SMA22-50	P2778802	22	40	30	19	
	BT30-SMA27-50	P2778803	27	48	30	21	
40	BT40-SMA16-60	P2778804	16	32	60	17	
	BT40-SMA22-60	P2778805	22	40	60	19	
	BT40-SMA27-60	P2778806	27	48	60	21	
	BT40-SMA32-60	P2778807	32	58	60	24	
	BT40-SMA40-60	P2778808	40	70	60	27	
50	BT50-SMA16-75	P2778809	16	32	75	17	
	BT50-SMA22-75	P2778810	22	40	75	19	
	BT50-SMA27-75	P2778811	27	48	75	21	
	BT50-SMA32-75	P2778812	32	58	75	24	
	BT50-SMA40-75	P2778813	40	70	75	27	
	BT50-SMA50-75	P2778814	50	90	75	30	

◆ УДЛИНЕННЫЕ

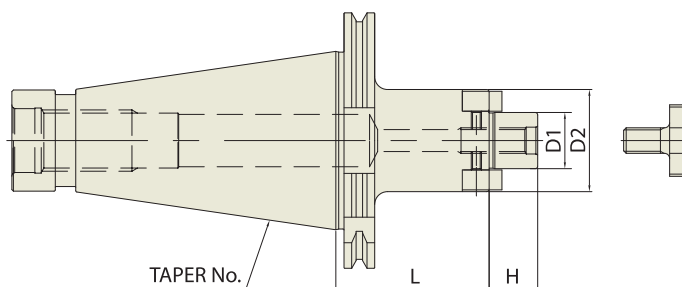
Unit : mm

КОНУС No.	МОДЕЛЬ	АРТИКУЛ	D1	D2	L	H	ВЕС (Kg)
40	BT40-SMA16-120	P2778815	16	32	120	17	
	BT40-SMA22-120	P2778816	22	40	120	19	
	BT40-SMA27-120	P2778817	27	48	120	21	
	BT40-SMA32-120	P2778818	32	58	120	24	
50	BT50-SMA16-120	P2778819	16	32	120	17	
	BT50-SMA22-120	P2778820	22	40	120	19	
	BT50-SMA27-120	P2778821	27	48	120	21	
	BT50-SMA32-120	P2778822	32	58	120	24	
	BT50-SMA40-120	P2778823	40	70	120	27	

ОПРАВКИ ДЛЯ ТОРЦОВО НАСАДНЫХ ФРЕЗ

ОПРАВКИ ДЛЯ ТОРЦОВЫХ НАСАДНЫХ ФРЕЗ

SMA



■ GOST 25827-93

GOST 25827-93	Taper Accuracy AT3	G Value -	RPM -	Coolant System A
----------------------	------------------------------	---------------------	-----------------	----------------------------

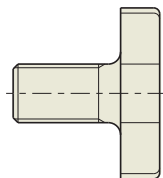
Unit : mm

КОНУС No.	МОДЕЛЬ	АРТИКУЛ	D1	D2	L	H	БЕС (Kg)
40	GOST40-SMA16-40	P2780401	16	32	40	17	
	GOST40-SMA16-100	P2780402	16	32	100	17	
	GOST40-SMA22-40	P2780403	22	40	40	19	
	GOST40-SMA22-100	P2780404	22	40	100	19	
	GOST40-SMA27-45	P2780405	27	48	45	21	
	GOST40-SMA32-45	P2780406	32	58	45	24	
50	GOST50-SMA16-40	P2780407	16	32	40	17	
	GOST50-SMA16-100	P2780408	16	32	100	17	
	GOST40-SMA22-40	P2780409	22	40	40	19	
	GOST40-SMA22-100	P2780410	22	40	100	19	
	GOST40-SMA27-45	P2780411	27	48	45	21	
	GOST40-SMA27-120	P2780412	27	48	120	21	
	GOST40-SMA32-45	P2780413	32	58	45	24	
	GOST40-SMA32-130	P2780414	32	58	130	24	
	GOST40-SMA40-55	P2780415	40	70	55	27	
	GOST40-SMA40-150	P2780416	40	70	150	27	
	GOST40-SMA50-60	P2780417	50	90	60	30	

ЗАПАСНЫЕ ДЕТАЛИ

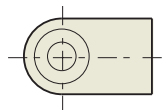
PART

(ДЛЯ ОПРАВОК ДЛЯ ТОРЦОВЫХ НАСАДНЫХ ФРЕЗ)



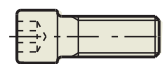
■ ЗАЖИМНОЙ БОЛТ

No.	ЗАЖИМНОЙ БОЛТ	EDP No.	Q'TY	SMA Dia.
33	M8×1.25	P2514051	1	16
34	M10×1.5	P2514052	1	22
35	M12×1.75	P2514053	1	27
36	M16×2.0	P2514054	1	32
37	M20×2.5	P2514055	1	40
38	M24×3.0	P2514056	1	50



■ ШПОНКА

No.	DRIVE KEY	EDP No.	Q'TY	SMA Dia.
45	8×7×2.8	P2778857	2	16
46	10×7.8×15.5	P2778858	2	22
47	12×9×18.5	P2778859	2	27
48	14×11.5×20.5	P2778860	2	32
49	16×13.5×23.5	P2778861	2	40
50	18×18×28.5	P2778862	2	50

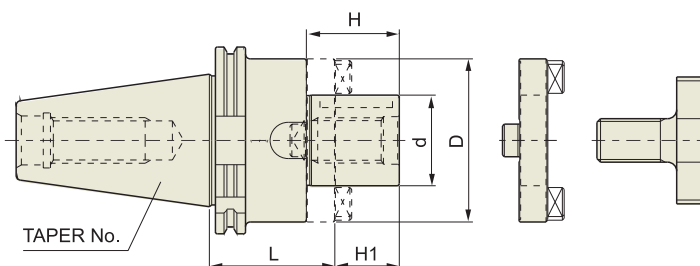


■ ШПОНОЧНЫЙ БОЛТ

No.	KEY BOLT	EDP No.	Q'TY	SMA Dia.
51	M3×0.5×8L	P2778863	2	16
52	M4×0.7×10L	P2778864	2	22
53	M5×0.8×12L	P2778865	2	27
54	M6×1.0×15L	P2778866	2	32
55	M6×1.0×15L	P2778866	2	40
56	M6×1.0×20L	P2778868	2	50

КОМБИНИРОВАННЫЕ ОПРАВКИ ДЛЯ ТОРЦОВЫХ НАСАДНЫХ ФРЕЗ

CMA



DIN 69871 -SK

Taper Accuracy AT3

G Value 6.3

RPM 15,000

Coolant System AD

■ DIN 69871-SK

◆ СТАНДАРТ

Unit : mm

КОНУС No.	МОДЕЛЬ	АРТИКУЛ	d	L	D	H1	H	PART No.	БЕС (Kg)
30	SK30-CMA16-50	P2524001	16	50	32	17	27	27, 33, 39	
	SK30-CMA22-50	P2524002	22	50	40	19	31	28, 34, 40	
	SK30-CMA27-55	P2524003	27	55	48	21	33	29, 35, 41	
40	SK40-CMA16-55	P2524004	16	55	32	17	27	27, 33, 39	
	SK40-CMA22-55	P2524005	22	55	40	19	31	28, 34, 40	
	SK40-CMA27-55	P2524006	27	55	48	21	33	29, 35, 41	
	SK40-CMA32-60	P2524007	32	60	58	24	38	30, 36, 42	
	SK40-CMA40-60	P2524008	40	60	70	27	41	31, 37, 43	
50	SK50-CMA16-55	P2524009	16	55	32	17	27	27, 33, 39	
	SK50-CMA22-55	P2524010	22	55	40	19	31	28, 34, 40	
	SK50-CMA27-55	P2524011	27	55	48	21	33	29, 35, 41	
	SK50-CMA32-55	P2524012	32	55	58	24	38	30, 36, 42	
	SK50-CMA40-55	P2524013	40	55	70	27	41	31, 37, 43	
	SK50-CMA50-70	P2524014	50	70	90	30	46	32, 38, 44	

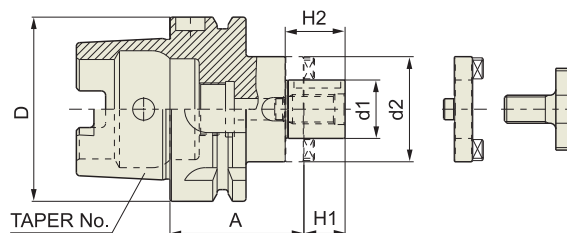
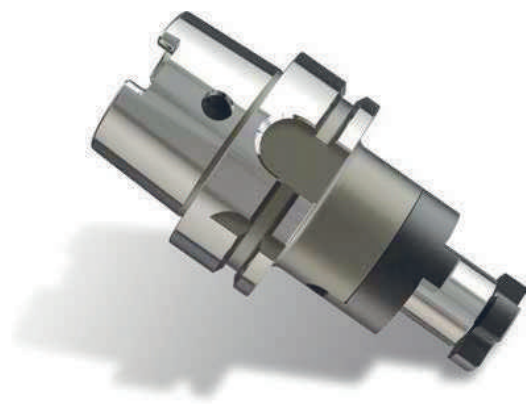
◆ УДЛИНЕННЫЕ

Unit : mm

КОНУС No.	МОДЕЛЬ	АРТИКУЛ	d	L	D	H1	H	PART No.	БЕС (Kg)
40	SK40-CMA16-100	P2524015	16	100	32	17	27	27, 33, 39	
	SK40-CMA22-100	P2524016	22	100	40	19	31	28, 34, 40	
	SK40-CMA27-100	P2524017	27	100	48	21	33	29, 35, 41	
	SK40-CMA32-100	P2524018	32	100	58	24	38	30, 36, 42	
50	SK50-CMA16-100	P2524019	16	100	32	17	27	27, 33, 39	
	SK50-CMA22-100	P2524020	22	100	40	19	31	28, 34, 40	
	SK50-CMA27-100	P2524021	27	100	48	21	33	29, 35, 41	
	SK50-CMA32-100	P2524022	32	100	58	24	38	30, 36, 42	
	SK50-CMA40-100	P2524023	40	100	70	27	41	31, 37, 43	

КОМБИНИРОВАННЫЕ ОПРАВКИ ДЛЯ ТОРЦОВЫХ НАСАДНЫХ ФРЕЗ

СМА



DIN 69893 - HSK

Taper Accuracy
-

G Value
6.3

RPM
15,000

Coolant System
AD

■ DIN 69893/ISO 12164-1-HSK FORM A

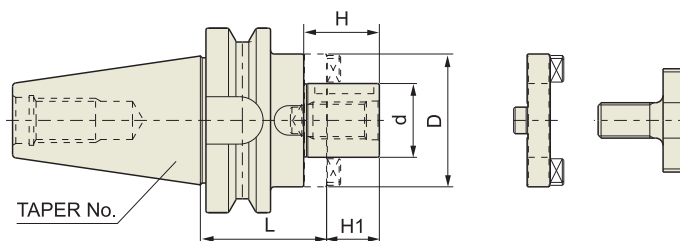
Unit : mm

КОНУС No.	МОДЕЛЬ	Артикул	D	d1	d2	A	H1	H2	PART No.	ВЕС (Kg)
50A	HSK50A-CMA16-50	P2562006	50	16	32	50	17	27	27, 33, 39	
	HSK50A-CMA22-50	P2562007	50	22	40	50	19	31	28, 34, 40	
	HSK50A-CMA27-65	P2562008	50	27	48	65	21	33	29, 35, 41	
	HSK50A-CMA32-65	P2562009	50	32	58	65	24	38	30, 36, 42	
63A	HSK63A-CMA16-60	P2562001	63	16	32	60	17	27	27, 33, 39	
	HSK63A-CMA22-60	P2562002	63	22	40	60	19	31	28, 34, 40	
	HSK63A-CMA27-60	P2562003	63	27	48	60	21	33	29, 35, 41	
	HSK63A-CMA32-60	P2562004	63	32	53	60	24	38	30, 36, 42	
	HSK63A-CMA40-70	P2562005	63	40	70	70	27	41	31, 37, 43	
100A	HSK100A-CMA16-60	P2562011	100	16	32	60	17	27	27, 33, 39	
	HSK100A-CMA22-60	P2562012	100	22	40	60	19	31	28, 34, 40	
	HSK100A-CMA27-60	P2562013	100	27	48	60	21	33	29, 35, 41	
	HSK100A-CMA32-60	P2562014	100	32	58	60	24	38	30, 36, 42	
	HSK100A-CMA40-70	P2562015	100	40	70	70	27	41	31, 37, 43	
	HSK100A-CMA50-80	P2562010	100	50	90	80	30	46	32, 38, 44	

ОПРАВКИ ДЛЯ ТОРЦОВО НАСАДНЫХ ФРЕЗ

КОМБИНИРОВАННЫЕ ОПРАВКИ ДЛЯ ТОРЦОВЫХ НАСАДНЫХ ФРЕЗ

CMA



■ СВТ (ВТ ДВОЙНОЙ КОНТАКТ)

CBT	Taper Accuracy AT3	G Value 2.5	RPM 25,000	Coolant System AD
-----	-----------------------	----------------	---------------	----------------------

◆ СТАНДАРТ

Unit : mm

КОНУС No.	МОДЕЛЬ	АРТИКУЛ	d	L	D	H1	H	PART No.	БЕС (Kg)
30	СВТ30-СМА16-50	P2775601	16	50	32	17	27	27, 33, 39	
	СВТ30-СМА22-50	P2775602	22	50	40	19	31	28, 34, 40	
	СВТ30-СМА27-55	P2775624	27	55	48	21	33	29, 35, 41	
40	СВТ40-СМА16-55	P2775604	16	55	32	17	27	27, 33, 39	
	СВТ40-СМА22-55	P2775605	22	55	40	19	31	28, 34, 40	
	СВТ40-СМА27-55	P2775606	27	55	48	21	33	29, 35, 41	
	СВТ40-СМА32-60	P2775607	32	60	58	24	38	30, 36, 42	
	СВТ40-СМА40-70	P2775625	40	70	70	27	41	31, 37, 43	
50	СВТ50-СМА16-70	P2775609	16	70	32	17	27	27, 33, 39	
	СВТ50-СМА22-70	P2775610	22	70	40	19	31	28, 34, 40	
	СВТ50-СМА27-70	P2775611	27	70	48	21	33	29, 35, 41	
	СВТ50-СМА32-70	P2775612	32	70	58	24	38	30, 36, 42	
	СВТ50-СМА40-70	P2775613	40	70	70	27	41	31, 37, 43	
	СВТ50-СМА50-70	P2775614	50	70	90	30	46	32, 38, 44	

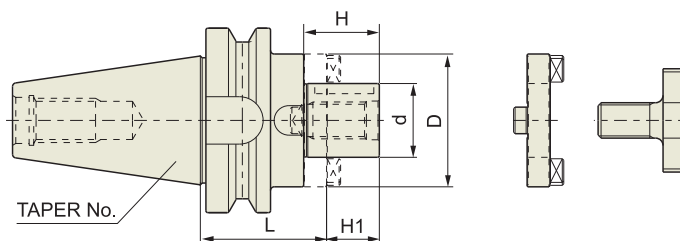
◆ УДЛИНЕННЫЕ

Unit : mm

КОНУС No.	МОДЕЛЬ	АРТИКУЛ	d	L	D	H1	H	PART No.	БЕС (Kg)
40	СВТ40-СМА16-100	P2775615	16	100	32	17	27	27, 33, 39	
	СВТ40-СМА22-100	P2775616	22	100	40	19	31	28, 34, 40	
	СВТ40-СМА27-100	P2775617	27	100	48	21	33	29, 35, 41	
	СВТ40-СМА32-100	P2775618	32	100	58	24	38	30, 36, 42	
50	СВТ50-СМА16-100	P2775619	16	100	32	17	27	27, 33, 39	
	СВТ50-СМА22-100	P2775620	22	100	40	19	31	28, 34, 40	
	СВТ50-СМА27-100	P2775621	27	100	48	21	33	29, 35, 41	
	СВТ50-СМА32-100	P2775622	32	100	58	24	38	30, 36, 42	
	СВТ50-СМА40-100	P2775623	40	100	70	27	41	31, 37, 43	

КОМБИНИРОВАННЫЕ ОПРАВКИ ДЛЯ ТОРЦОВЫХ НАСАДНЫХ ФРЕЗ

СМА



**JIS B6339
- BT**

**Taper Accuracy
AT3**

**G Value
6.3**

**RPM
15,000**

**Coolant System
AD**

■ JIS B6339/MAS 403-BT

◆ СТАНДАРТ

Unit : mm

КОНУС No.	МОДЕЛЬ	Артикул	d	L	D	H1	H	PART No.	ВЕС (Kg)
30	BT30-СМА16-50	P2544001	16	50	32	17	27	27, 33, 39	
	BT30-СМА22-50	P2544002	22	50	40	19	31	28, 34, 40	
	BT30-СМА27-55	P2544003	27	55	48	21	33	29, 35, 41	
40	BT40-СМА16-55	P2544004	16	55	32	17	27	27, 33, 39	
	BT40-СМА22-55	P2544005	22	55	40	19	31	28, 34, 40	
	BT40-СМА27-55	P2544006	27	55	48	21	33	29, 35, 41	
	BT40-СМА32-60	P2544007	32	60	58	24	38	30, 36, 42	
	BT40-СМА40-70	P2544024	40	70	70	27	41	31, 37, 43	
50	BT50-СМА16-70	P2544009	16	70	32	17	27	27, 33, 39	
	BT50-СМА22-70	P2544010	22	70	40	19	31	28, 34, 40	
	BT50-СМА27-70	P2544011	27	70	48	21	33	29, 35, 41	
	BT50-СМА32-70	P2544012	32	70	58	24	38	30, 36, 42	
	BT50-СМА40-70	P2544013	40	70	70	27	41	31, 37, 43	
	BT50-СМА50-70	P2544014	50	70	90	30	46	32, 38, 44	

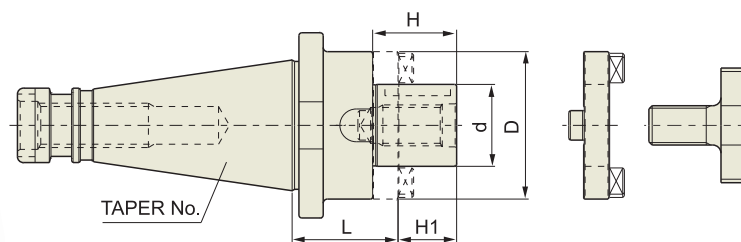
◆ УДЛИНЕННЫЕ

Unit : mm

КОНУС No.	МОДЕЛЬ	Артикул	d	L	D	H1	H	PART No.	ВЕС (Kg)
40	BT40-СМА16-100	P2544015	16	100	32	17	27	27, 33, 39	
	BT40-СМА22-100	P2544016	22	100	40	19	31	28, 34, 40	
	BT40-СМА27-100	P2544017	27	100	48	21	33	29, 35, 41	
	BT40-СМА32-100	P2544018	32	100	58	24	38	30, 36, 42	
50	BT50-СМА16-100	P2544019	16	100	32	17	27	27, 33, 39	
	BT50-СМА22-100	P2544020	22	100	40	19	31	28, 34, 40	
	BT50-СМА27-100	P2544021	27	100	48	21	33	29, 35, 41	
	BT50-СМА32-100	P2544022	32	100	58	24	38	30, 36, 42	
	BT50-СМА40-100	P2544023	40	100	70	27	41	31, 37, 43	

КОМБИНИРОВАННЫЕ ОПРАВКИ ДЛЯ ТОРЦОВЫХ НАСАДНЫХ ФРЕЗ

CMA



DIN 2080 - ISO	Taper Accuracy AT3	G Value -	RPM -	Coolant System A
----------------	-----------------------	--------------	----------	---------------------

■ DIN 2080-ISO

◆ СТАНДАРТ

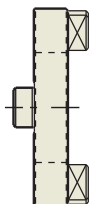
Unit : mm

КОНУС No.	МОДЕЛЬ	АРТИКУЛ	d	L	D	H1	H	PART No.	BEK (Kg)
30	ISO30-CMA16-35	P2514001	16	35	32	17	27	27, 33, 39	
	ISO30-CMA22-35	P2514002	22	35	40	19	31	28, 34, 40	
	ISO30-CMA27-35	P2514003	27	35	48	21	33	29, 35, 41	
40	ISO40-CMA16-52	P2514004	16	52	32	17	27	27, 33, 39	
	ISO40-CMA22-52	P2514005	22	52	40	19	31	28, 34, 40	
	ISO40-CMA27-52	P2514006	27	52	48	21	33	29, 35, 41	
	ISO40-CMA32-52	P2514007	32	52	58	24	38	30, 36, 42	
	ISO40-CMA40-52	P2514008	40	52	70	27	41	31, 37, 43	
50	ISO50-CMA16-55	P2514009	16	55	32	17	27	27, 33, 39	
	ISO50-CMA22-55	P2514010	22	55	40	19	31	28, 34, 40	
	ISO50-CMA27-55	P2514011	27	55	48	21	33	29, 35, 41	
	ISO50-CMA32-55	P2514012	32	55	58	24	38	30, 36, 42	
	ISO50-CMA40-55	P2514013	40	55	70	27	41	31, 37, 43	
	ISO50-CMA50-55	P2514014	50	55	90	30	46	32, 38, 44	

◆ УДЛИНЕННЫЕ

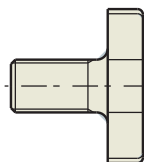
Unit : mm

КОНУС No.	МОДЕЛЬ	АРТИКУЛ	d	L	D	H1	H	PART No.	BEK (Kg)
40	ISO40-CMA16-125	P2514015	16	125	32	17	27	27, 33, 39	
	ISO40-CMA22-125	P2514016	22	125	40	19	31	28, 34, 40	
	ISO40-CMA27-125	P2514017	27	125	48	21	33	29, 35, 41	
	ISO40-CMA32-125	P2514018	32	125	58	24	38	30, 36, 42	
50	ISO50-CMA16-125	P2514019	16	125	32	17	27	27, 33, 39	
	ISO50-CMA22-125	P2514020	22	125	40	19	31	28, 34, 40	
	ISO50-CMA27-125	P2514021	27	125	48	21	33	29, 35, 41	
	ISO50-CMA32-125	P2514022	32	125	58	24	38	30, 36, 42	
	ISO50-CMA40-125	P2514023	40	125	70	27	41	31, 37, 43	



■ ПРИВОДНЫЕ КОЛЬЦА МУФТ

№.	ПРИВОД.КОЛЬЦАМУФТ	Артикул	Q'TY	CMA Dia.
27	#16	P2514063	1	16
28	#22	P2514064	1	22
29	#27	P2514065	1	27
30	#32	P2514066	1	32
31	#40	P2514067	1	40
32	#50	P2514068	1	50



■ ЗАЖИМНОЙ БОЛТ

№.	ЗАЖИМНОЙ БОЛТ	Артикул	Q'TY	CMA Dia.
33	M8×1.25	P2514051	1	16
34	M10×1.5	P2514052	1	22
35	M12×1.75	P2514053	1	27
36	M16×2.0	P2514054	1	32
37	M20×2.5	P2514055	1	40
38	M24×3.0	P2514056	1	50

■ КЛЮЧ

№.	КЛЮЧ	Артикул.	Q'TY	CMA Dia.
39	4×4×20	P2514057	1	16
40	6×6×25	P2514058	1	22
41	7×7×25	P2514059	1	27
42	8×7×28	P2514060	1	32
43	10×8×32	P2514061	1	40
44	12×8×36	P2514062	1	50

