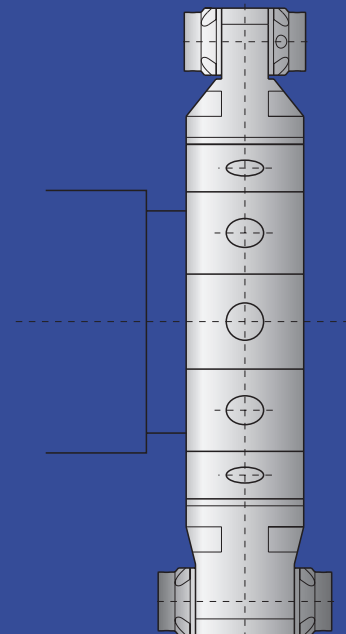
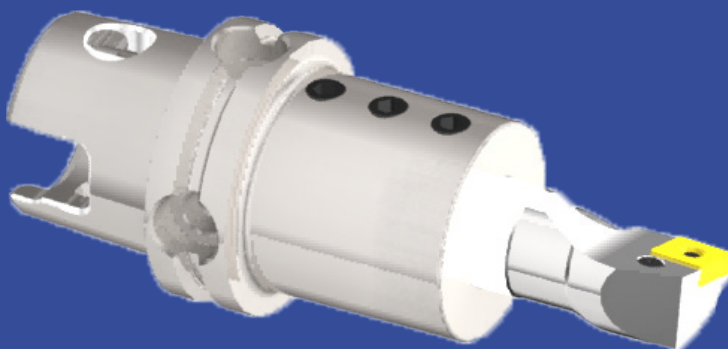
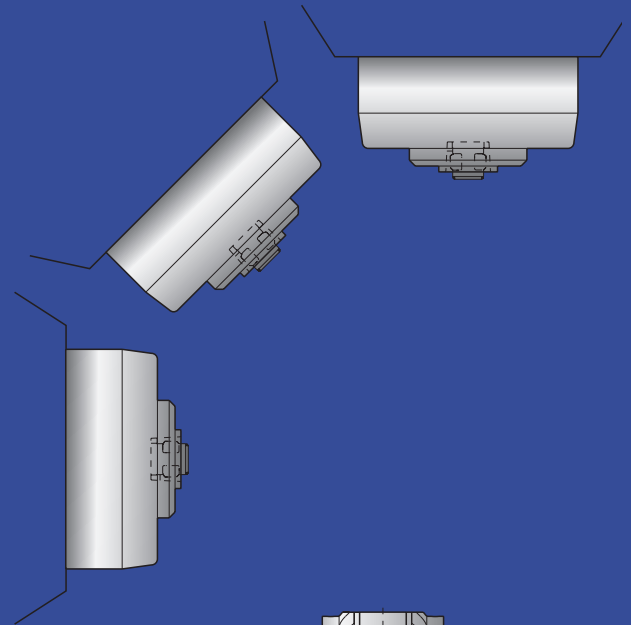
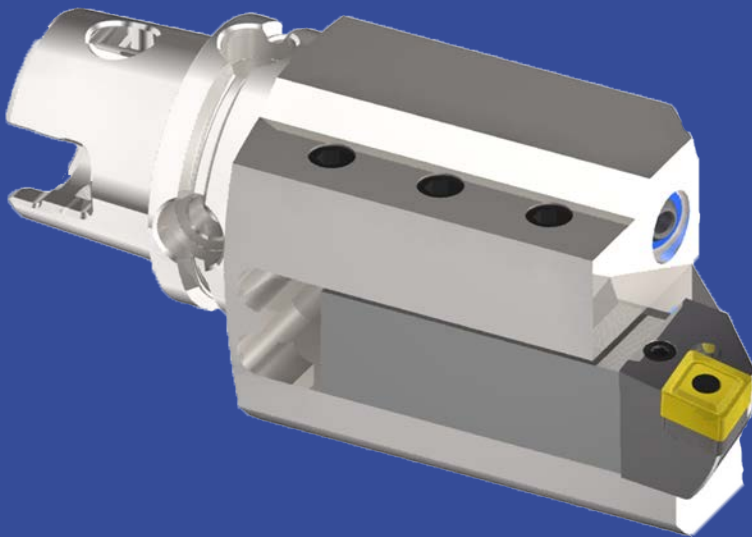


Dreh - werkzeuge Turning tools

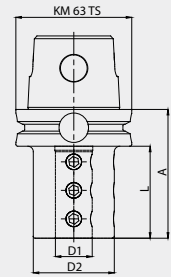


Bohrstangenhalter Typ ADI

Boring bar holder type ADI



| Bestell-Nr. / Order number | D1 | D2 | A | L |
|-------------------------------|----|----|-----|----|
| KU6.B06.K01.060 | 6 | 34 | 60 | 36 |
| KU6.B08.K01.060 | 8 | 34 | 60 | 36 |
| KU6.B10.K01.060 | 10 | 34 | 60 | 36 |
| KU6.B12.K01.060 | 12 | 36 | 60 | 36 |
| KU6.B16.K01.065 | 16 | 40 | 65 | 51 |
| KU6.B20.K01.070 | 20 | 44 | 70 | 51 |
| KU6.B25.K01.070 | 25 | 50 | 70 | 51 |
| KU6.B32.K01.080 | 32 | 56 | 80 | 66 |
| KU6.B40.K01.105 | 40 | 63 | 105 | - |



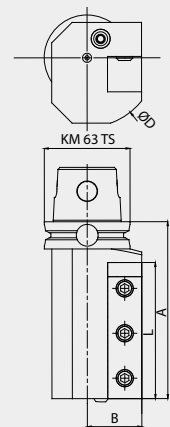
Werkzeughalter axial

Tool holder axial



| Bestell-Nr. / Order number | B | Vierkant/ Square | A | L | ØD | R/L |
|-------------------------------|----|---------------------|-----|-----|-----|-----|
| KU6.V20.L11.100 | 30 | 20x20 | 100 | 70 | 80 | L |
| KU6.V20.R11.100 | 30 | 20x20 | 100 | 70 | 80 | R |
| KU6.V25.L11.130 | 38 | 25x25 | 130 | 100 | 102 | L |
| KU6.V25.R11.130 | 38 | 25x25 | 130 | 100 | 102 | R |

Right-hand shown

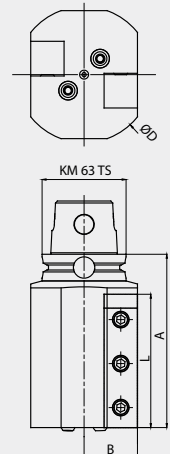


Werkzeughalter axial doppelt

Tool holder axial double

| Bestell-Nr. / Order number | B | Vierkant/ Square | A | L | ØD | R/L |
|-------------------------------|----|---------------------|-----|-----|-----|-----|
| KU6.V20.R21.100 | 30 | 20x20 | 100 | 70 | 80 | R |
| KU6.V25.R21.130 | 40 | 25x25 | 130 | 100 | 102 | R |

Right-hand shown

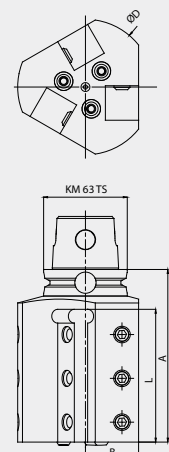


Werkzeughalter axial dreifach

Tool holder axial triple

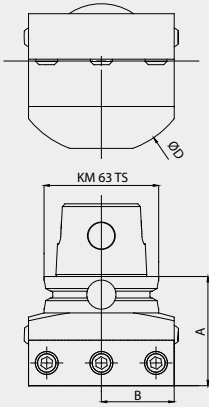
| Bestell-Nr. / Order number | B | Vierkant/ Square | A | L | ØD | R/L |
|-------------------------------|----|---------------------|-----|-----|-----|-----|
| KU6.V20.R31.100 | 36 | 20x20 | 100 | 70 | 90 | R |
| KU6.V25.R31.130 | 40 | 25x25 | 130 | 100 | 102 | R |

Right-hand shown



Werkzeughalter radial

Tool holder radial

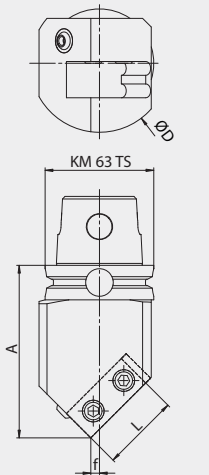


| Bestell-Nr. / Order number | B | Vierkant/ Square | A | ØD | R/L |
|-------------------------------|----|---------------------|----|-----|-----|
| KU6.V20.N11.060 | 30 | 20x20 | 60 | 90 | R/L |
| KU6.V25.N11.060 | 40 | 25x25 | 60 | 102 | R/L |



Werkzeughalter 45°

Tool holder 45°



| Bestell-Nr. / Order number | f | Vierkant/ Square | A | ØD | R/L |
|-------------------------------|----|---------------------|-----|-----|-----|
| KU6.V20.R12.100 | 15 | 20x20 | 100 | 80 | R |
| KU6.V20.L12.100 | 15 | 20x20 | 100 | 80 | L |
| KU6.V25.R12.100 | 5 | 25x25 | 100 | 102 | R |
| KU6.V25.L12.100 | 5 | 25x25 | 100 | 102 | L |

Right-hand shown

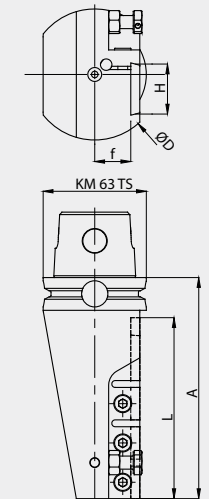


Abstechhalter axial

Cut-off block axial

- zur Aufnahme von Stechschwertern
- mit Innenkühlung

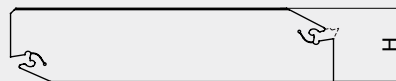
- to hold cut-off blades
- with inner coolant supply



| Bestell-Nr. / Order number | B | A | H | L | ØD | R/L |
|-------------------------------|----|-----|----|-----|----|-----|
| KU6.AM3.K11.135 | 22 | 135 | 32 | 110 | 80 | R |
| KU6.AM3.K12.135 | 22 | 135 | 32 | 110 | 80 | L |

Stechschwert / cut-off blade

Right-hand shown

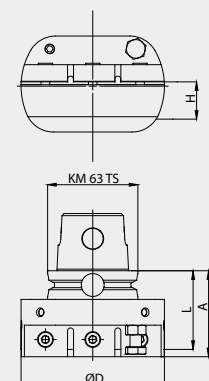


Abstechhalter radial

Cut-off block radial

- zur Aufnahme von Stechschwertern
- mit Innenkühlung

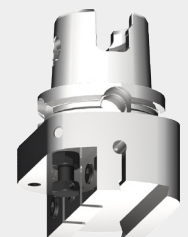
- to hold cut-off blades
- with inner coolant supply



| Bestell-Nr. / Order number | A | H | L | ØD | R/L |
|-------------------------------|----|----|------|-----|-----|
| KU6.AM3.K11.060 | 60 | 32 | 54.5 | 100 | R/L |

Stechschwert / cut-off blade

Right-hand shown

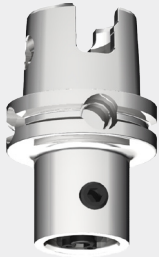
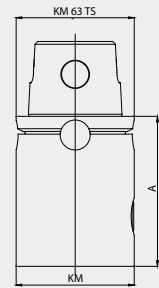




KM-Verlängerung

KM-extension

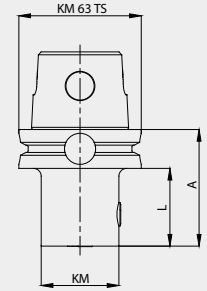
| Bestell-Nr. / Order number | KM TS | KM | A |
|-------------------------------|-------|----|-----|
| KU6.KM6.K01.080 | 63 | 63 | 80 |
| KU6.KM6.K01.120 | 63 | 63 | 120 |



KM-Reduktion

KM-reduction

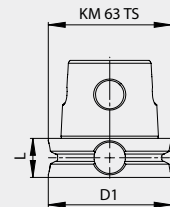
| Bestell-Nr. / Order number | KM TS | KM | A | L |
|-------------------------------|-------|----|----|----|
| KU6.KM4.K01.060 | 63 | 40 | 60 | 40 |



KM-Trennstellenverschluss

KM-blanking plug

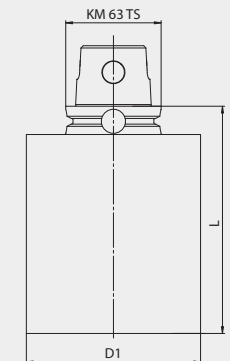
| Bestell-Nr. / Order number | KM TS | D1 | L |
|-------------------------------|-------|----|----|
| KU6.000.001.020 | 63 | 63 | 20 |



KM-Rohling

KM-blank

| Bestell-Nr. / Order number | KM TS | D1 | L |
|-------------------------------|-------|-----|-----|
| KU6.Ro6.001.200 | 63 | 63 | 200 |
| KU6.Ro1.001.150 | 63 | 115 | 150 |



Ersatzteile / Zubehör

Spare parts / Accessories

| Für Werkzeughalter/ Für Bohrstangenhalter For tool holder/ For boring bar holder | Bestell-Nr. / Order number | Klemmschraube/ Clamping screw | Dimension |
|---|-------------------------------|----------------------------------|-----------|
| xxx.V20.xxx.xxx | ERU.GS6.001.018 | | M10 x 18 |
| xxx.V25.xxx.xxx | ERU.GS7.001.025 | | M12 x 25 |
| xxx.B06.xxx.xxx | ERU.GS4.001.010 | | M 6 x 10 |
| xxx.B08...B12.xxx.xxx | ERU.GS5.001.010 | | M 8 x 10 |
| xxx.B16...B40.xxx.xxx | ERU.GS6.001.012 | | M10 x 12 |